



**SPECIFICATIONS, LISTINGS AND APPROVALS**

Available Diameters: 1/4"

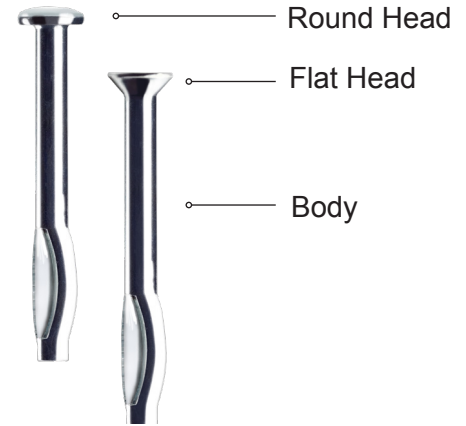
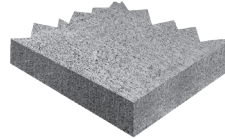
Material: Carbon Steel

Finish: Zinc plated per ASTM B633 Type III, SC1

**KEY FEATURES & BENEFITS**

- ▶ One-piece pre-expanded anchor
- ▶ One-Step installation
- ▶ Fast & easy to install
- ▶ Same diameter for drill bit and anchor
- ▶ Must be installed through fixture
- ▶ Available in flat and round head
- ▶ For use in concrete and stone
- ▶ Non-removable
- ▶ Body - Heat Treated Carbon Steel that achieve strong pullout and shear strengths

**MATERIALS**



INSTALLATION SPECIFICATIONS AND PERFORMANCE DATA							SAFE WORKING LOAD - For Recommended Embedment				
							Concrete strength: 2,000 psi		Concrete strength: 4,000 psi		
Head style	Product code	SKU	Industrial Pack / Qty	Size	Drill Size	Minimum Embedment	Recommended Embedment	TENSION lb	SHEAR lb	TENSION lb	SHEAR lb
FLAT head	300C4436	402C	100	1/4" x 1-1/2"	1/4"	1-1/8"	1-1/2"	250	465	375	595
	300C4443	403C	100	1/4" x 2"	1/4"	1-1/8"	1-1/2"	250	465	375	595
	300C4448	404C	100	1/4" x 2-1/2"	1/4"	1-1/8"	1-1/2"	250	465	375	595
	300C4455	405C	100	1/4" x 3"	1/4"	1-1/8"	1-1/2"	250	465	375	595
	300C4460	406C	100	1/4" x 3-1/2"	1/4"	1-1/8"	1-1/2"	250	465	375	595
	300C4466	407C	100	1/4" x 4"	1/4"	1-1/8"	1-1/2"	250	465	375	595
ROUND head	300C7427	410C	100	1/4" x 1-1/4"	1/4"	1-1/8"	1-1/2"	250	465	375	595
	300C7436	411C	100	1/4" x 1-1/2"	1/4"	1-1/8"	1-1/2"	250	465	375	595
	300C7443	412C	100	1/4" x 2"	1/4"	1-1/8"	1-1/2"	250	465	375	595
	300C7448	413C	100	1/4" x 2-1/2"	1/4"	1-1/8"	1-1/2"	250	465	375	595

**Load adjustment factor in TENSION**

	Spacing (inches)	Concrete 2000 psi	Concrete 4000 psi
<b>Edge distance : 2 inches</b>	1	0.60	0.47
	1-1/4	0.66	0.48
	1-1/2	0.68	0.57
	1-3/4	0.76	0.65
	2	0.80	0.77
	2-1/2	1.00	1.00

**Load adjustment factor in SHEAR**

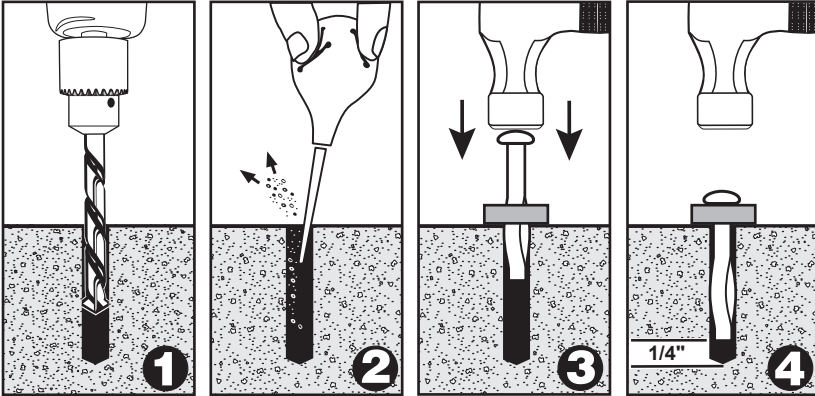
	Spacing (inches)	Concrete 2,000 psi	Concrete 4,000 psi
<b>Edge distance : 2 inches</b>	1	0.31	0.32
	1-1/4	0.34	0.35
	1-1/2	0.41	0.38
	1-3/4	0.51	0.53
	2	0.60	0.69
	2-1/2	1.00	1.00



January 10th, 2018



**INSTALLATION INSTRUCTIONS**



1. Drill a hole into the concrete, 1/4" deeper than bolt embedment.
2. Clean the hole using a dust blower or compressed air.
3. Insert the Split Bolt Anchor through the object you need to affix and insert into the hole.
4. With a hammer, hit the nail until the anchor is set tightly against the object to be fastened.

**TOOLS REQUIRED**



**CAUTION :**

Always wear safety glasses.  
Follow the drill manufacturer's safety instructions.  
Use only solid carbide-tipped drill bits per ANSI B212.15 standard.

**NOTES:**

- Technical data provided is only for the use of a qualified technician and /or design engineer.
- **Data used by persons not qualified could cause serious damage, injury or even death.**
- Safe working loads represent a safety factor of 4:1 from ultimate test loads.
- To meet recommended load capacity, use the recommended type and drill size, as well as the recommended embedment.
- **THE HOLE DEPTH MUST BE 1/4" DEEPER THAN THE RECOMMENDED EMBEDMENT.**
- Concrete must be uncracked.
- This anchor is not recommended for installations at an angle (loads may be different).
- Tension and shear loads may vary according to the quality of the concrete.
- Spacing and edging minimums are recommended to prevent concrete deterioration :

<b>For 1/4" anchors, the distances are:</b>
1 " spacing minimum between anchors
2" spacing minimum distance to edge

